

**BEXIE ENERGY**

## **Structures**

Durable mounting systems for rooftops, ground installations, and carports.



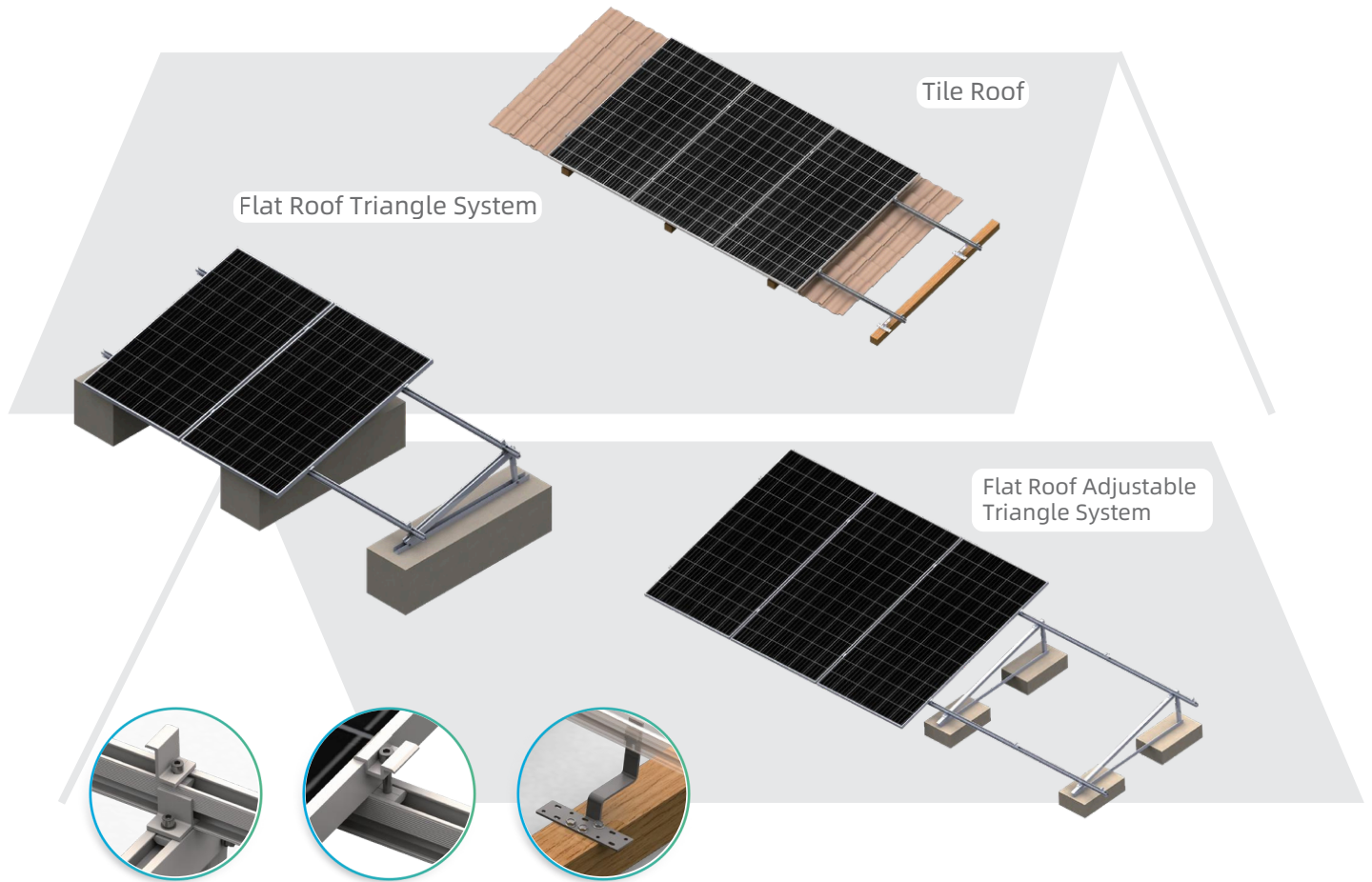
+34 985 194 232



[www.bexieenergy.com](http://www.bexieenergy.com)



Calle Peña Santa 68, Polígono Industrial  
Silvota, 33192, Llanera, Asturias

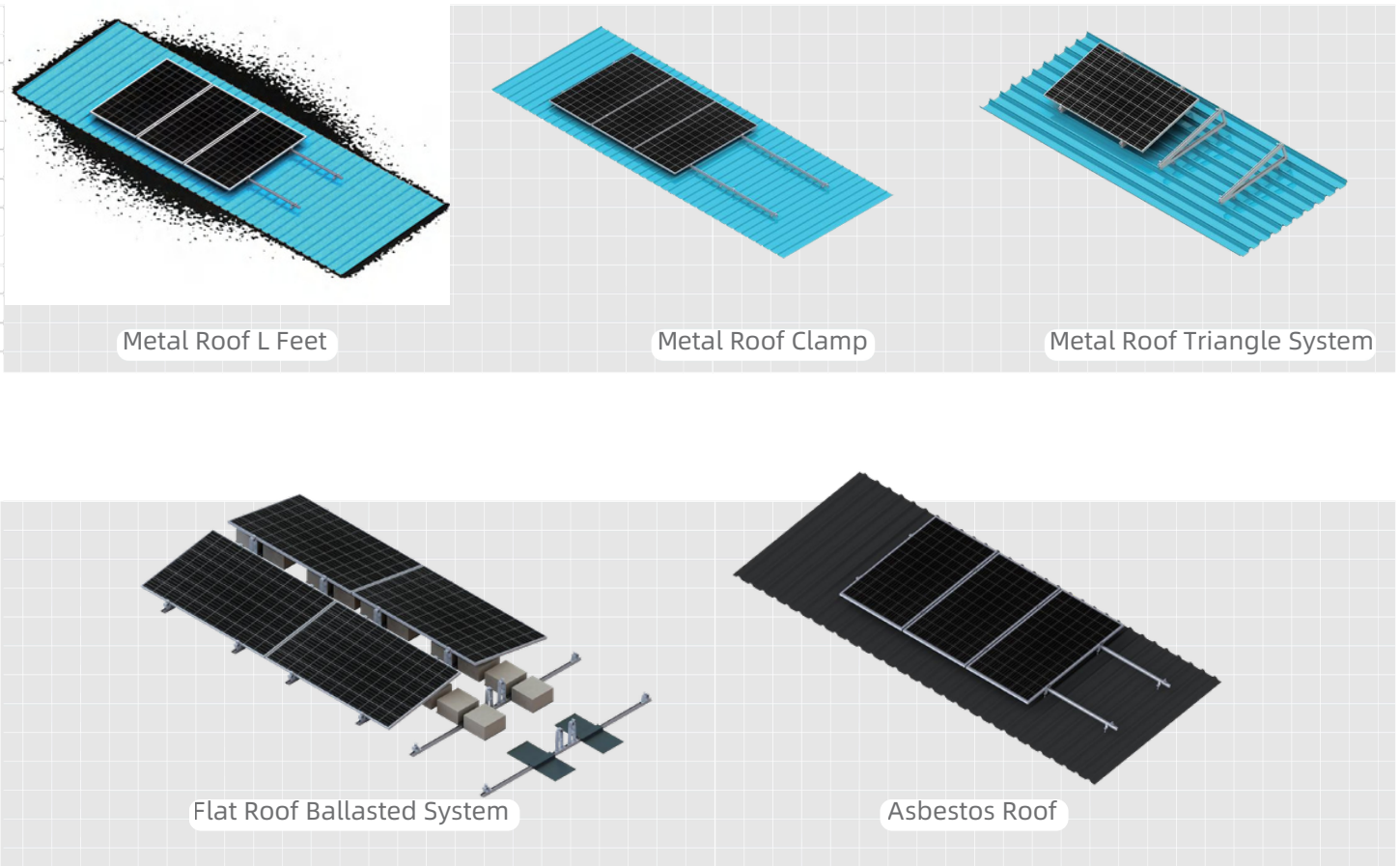


Tile Roof
Flat Roof

## ● Residential Rooftop Solar

Designed for residential rooftop, including tile roof and flat roof etc, considering roof structure and aesthetics make sure the system easy to install and solid.

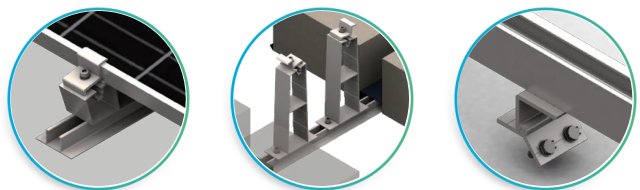
| TECHNICAL DATA  |  |
|-----------------|--|
| Wind Speed      | 60m/s(3s gust,MRI=50Y)   |
| Snow Load       | 0.55 Kpa   |
| Module Layout   | Landscape & Portrait   |
| Tilt Angle      | 10-40°   |
| Material        | AL6005-T6, Q235B Q355B, Zn-Al-Mg Coating Steel, Stainless Steel  |
| Design Standard | ASCE 7-05/7-10/7-16   GB50009-2012   JISC 8955-2017   AS NZS1170.2-2021   EUROCODE 0-9   NSCP 2015   Nch 432 ... |

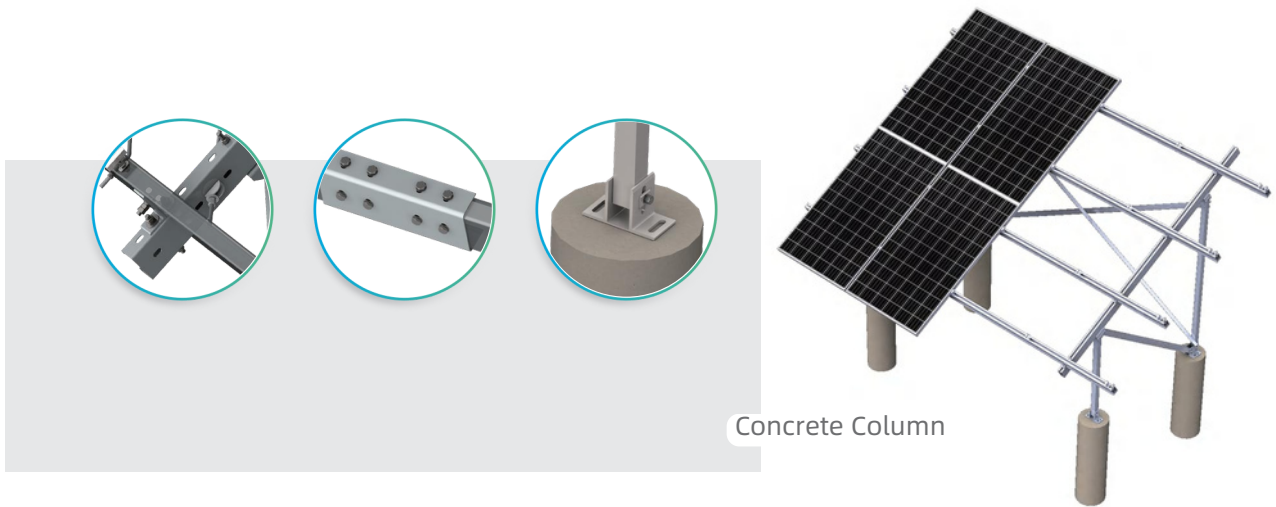


● **Commercial Rooftop Solar**    **Metal Roof**    **Flat Roof**    **Asbestos Roof**    **Asphalt Tile Roof**

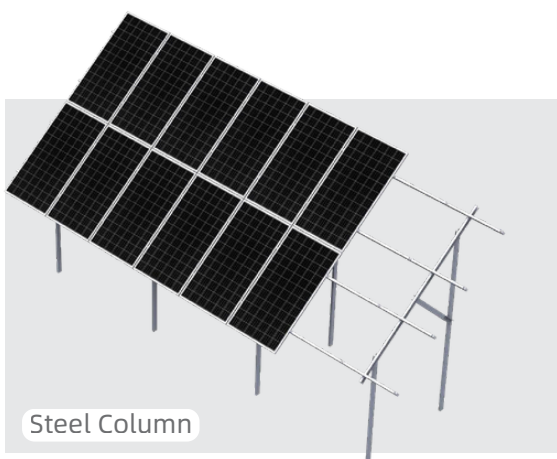
Designed for BEXIE, warehouse or commercial building rooftop project, BEXIE provides various solution for different scenarios. Based on different material selection, structure desian and weight optimization, BEXIE provides most cost effective and easy to install solutions. solutions.

| TECHNICAL DATA  |   |
|-----------------|---|
| Wind Speed      | 60m/s(3s gust,MRI=50Y)  |
| Snow Load       | 0.55 Kpa  |
| Module Layout   | Landscape & Portrait  |
| Tilt Angle      | 10-30°  |
| Material        | AL6005-T6, Q235B Q355B, Zn-Al-Mg Coating Steel, Stainless Steel   |
| Design Standard | ASCE 7-05/7-10/7-16   GB50009-2012   JISC B955-2017   AS NZS1170.2-2001   EURCODF 0-9   NSCP 2015   Nch 432 ... |

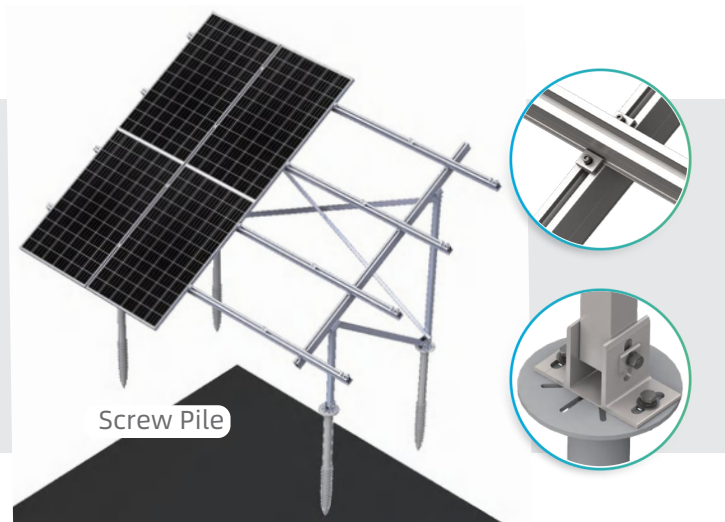




Concrete Column



Steel Column



Screw Pile

● Flat Ground

Steel Column

Concrete Column

Screw Pile

BEXIE provides different flat ground mounting solution based on different materials and scenarios, calculated solid structure design provides reliable-support for solar modules, corrosion-resistant and durable.

| TECHNICAL DATA  |  |
|-----------------|--|
| Wind Speed      | 70m/s(3s gust,MRI=50Y)   |
| Snow Load       | <200cm   |
| Module Layout   | Landscape & Portrait   |
| Tilt Angle      | 0-60°  |
| Material        | AL6005-T6, Q235B Q355B, Zn-Al-Mg Coating Steel, Stainless Steel  |
| Design Standard | ASCE 7-10/13/16   GB50009-2012   JIS C 8955-2017   AS NZS1702-2021   EURCODE 0-9   NSCP 2015   Nch-432 |

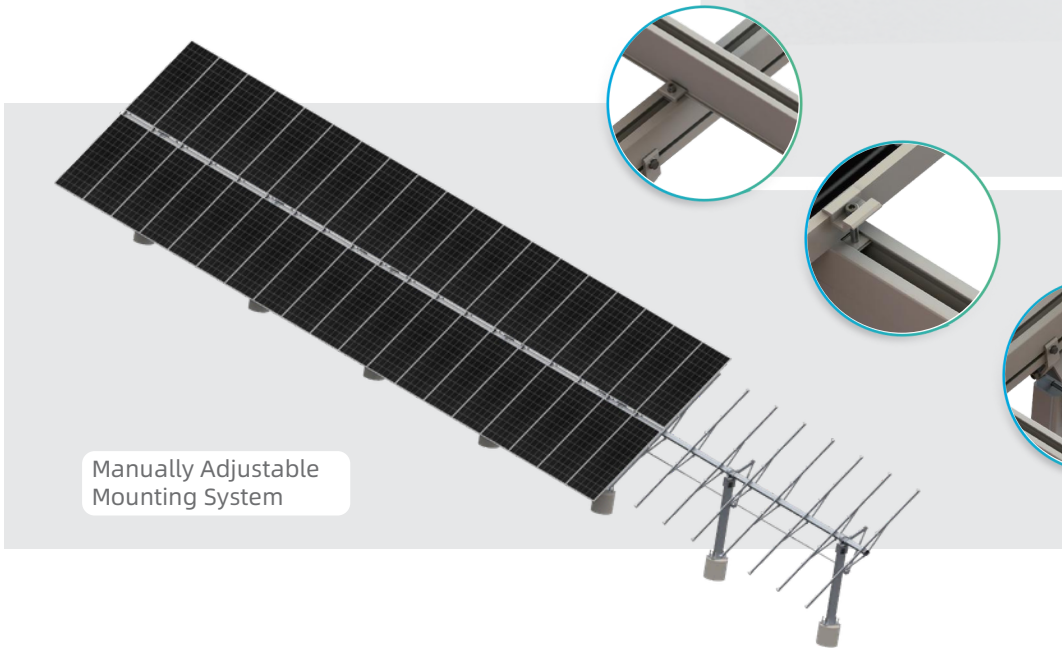
## Mountain Land

BEXIE provides various solutions based on different land conditions, reduce the cost of land levelling. Make sure the mounting system installed on the mountain land safe and reliable

| TECHNICAL DATA  |   |
|-----------------|---|
| Wind Speed      | 70m/s(3s gust,MRI=50Y)  |
| Snow Load       | <200cm  |
| Module Layout   | Landscape & Portrait  |
| Tilt Angle      | 0-60°   |
| Material        | AL6005-T6, Q235B Q355B, Zn-Al-Mg Coating Steel, Stainless Steel   |
| Design Standard | ASCE 7-05/7-10/7-16   GB50009-2012   JISC 8955-2017   AS NZS1170.2-2021   EURCOOF 0-9   NSCP-2015   Nch-432 ... |



Steel Column

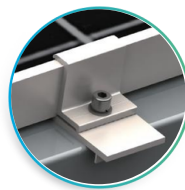
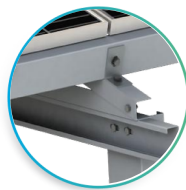


Manually Adjustable Mounting System

## Manually Adjustable

The system can be manually adjust from south to north (5-45°) based on different lighting conditions, flexible and can increase system generation, no need for motor drive, lower down the whole system cost.

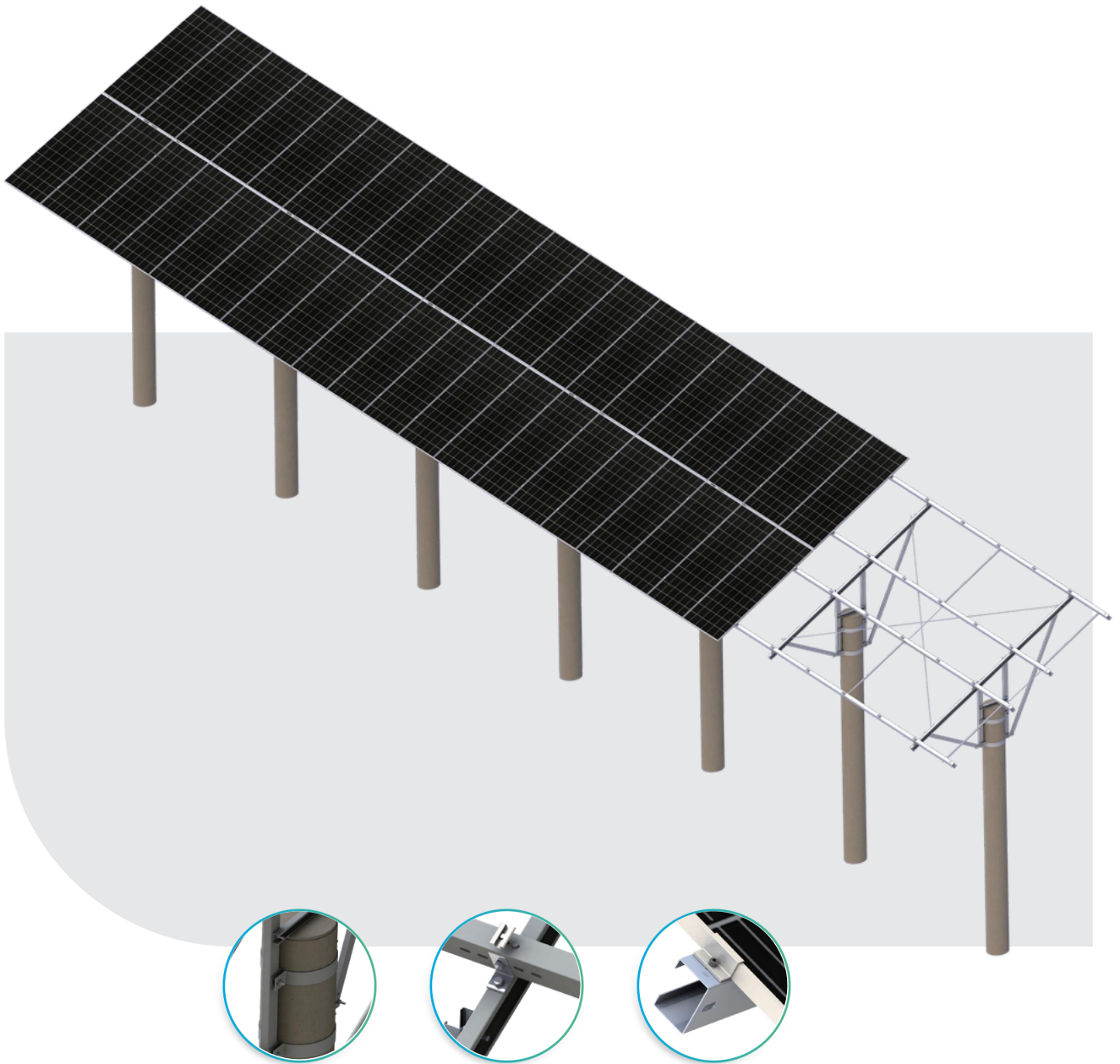
| TECHNICAL DATA  |  |
|-----------------|--|
| Wind Speed      | 50m/s(3s gust,MRI=50Y)   |
| Snow Load       | 0.50 Kpa   |
| Module Layout   | Landscape & Portrait   |
| Tilt Angle      | 5-45°  |
| Material        | Q235B Q355B, Zn-Al-Mg Coating Steel  |
| Design Standard | ASCE7-05/7-10/7-16 GB50009-2012 JISC8955-2017 AS NZS1170.2-2021   EURCOOF 0-9   NSCP-2015   Nch-432 .... |



● **Agriculture Photovoltaic Complementary Mounting System**

Designed for agriculture photovoltaic complementary projects, improve the land utilization, gain the output for both.

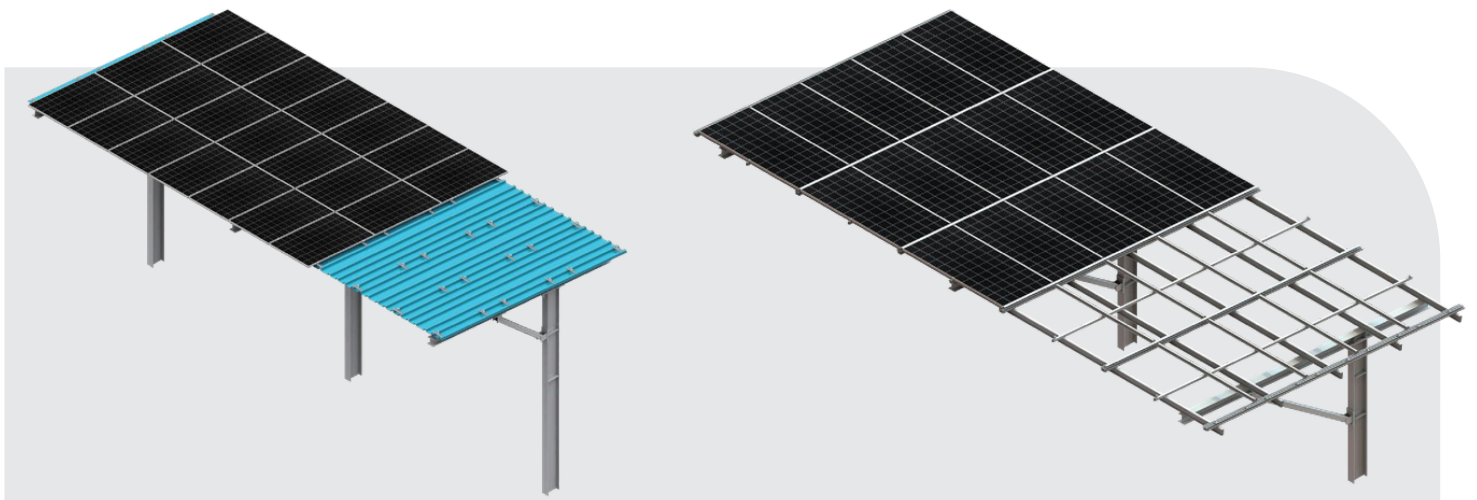
| TECHNICAL DATA  |   |
|-----------------|---|
| Wind Speed      | 70m/s(3s gust,MRI=50Y)  |
| Snow Load       | 0.55 Kpa  |
| Module Layout   | Landscape & Portrait  |
| Tilt Angle      | 5-45°   |
| Material        | Q235B Q355B、Zn-Al-Mg Coating Steel、AL6005-T6  |
| Design Standard | ASCE7-05/7-10/7-16 GB50009-2012 ISC8955-2017 ASNZS1170.2-2021 EURCODF 0-9 NSCP 2015 Nch 432 ... |



## ● Fishery Photovoltaic Complementary Mounting System

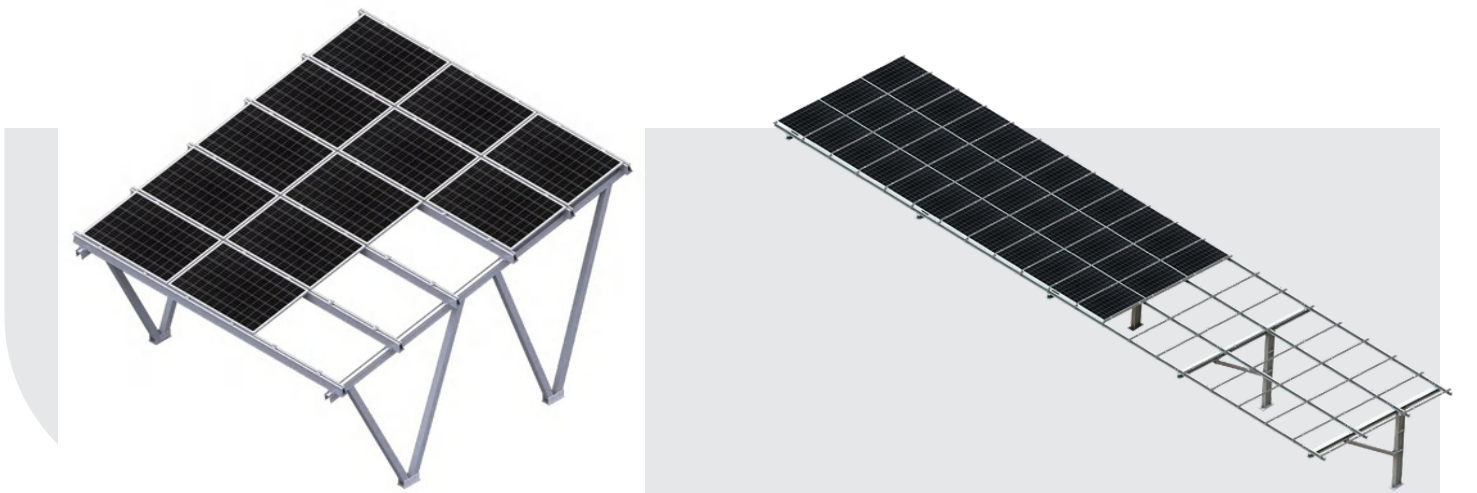
Combine the fishery and photovoltaic business, install solar modules over the fishery water, mudflat and saline-alkali land, improve the land utilization. Corrosion-resistant and high-strength material selected, make sure the system working in various weather conditions.

| TECHNICAL DATA  |   |
|-----------------|---|
| Wind Speed      | 70m/s(3s gust,MRI=50Y)  |
| Snow Load       | 0,50 Kpa  |
| Module Layout   | Landscape & Portrait  |
| Tilt Angle      | 5-45°   |
| Material        | Q235B Q355B、Zn-Al-Mg Coating Steel  |
| Design Standard | ASCE7-05/7-10/7-16 GB50009-2012 ISC8955-2017 AS NZS1170.2-2021 EURCODF 0-9 NSCP 2015 Nch 432..... |



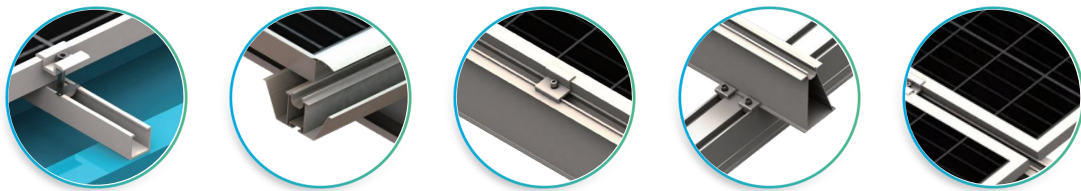
Water-proof Carport 1

Water-proof Carport 2



Aluminum Carport

Carbon Steel Carport



Water-proof Carport

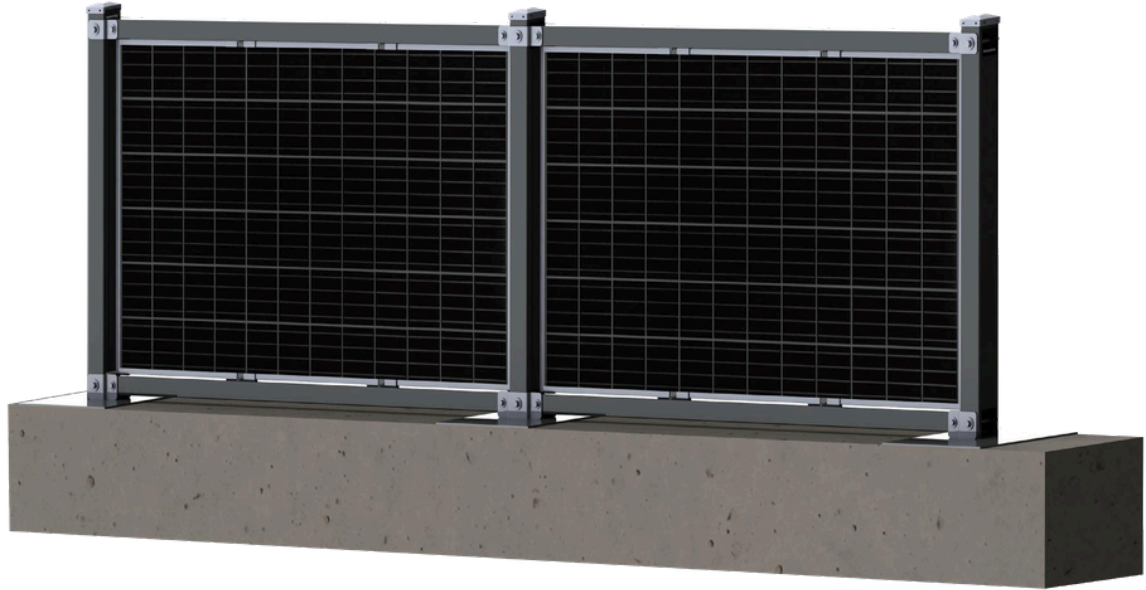
Aluminum Carport

Carbon Steel Carport

## ● Solar Carport

Designed for commercial and residential both, integrated with waterproof structure design, provides protection for car and generate power at the same time. Carport is well designed for heavy snow and windy weather.

| TECHNICAL DATA  |  |
|-----------------|--|
| Wind Speed      | 70m/s(3s gust,MRI=50Y)   |
| Snow Load       | 0.55 Kpa   |
| Module Layout   | Landscape & Portrait   |
| Tilt Angle      | 5-30°  |
| Material        | Q235B Q355B、Zn-Al-Mg Coating Steel、AL6005-T6   |
| Design Standard | ASCE7-05/7-10/7-16 GB50009-2012 ISC8955-2017 ASNZS1170.2-2021 EURCODE 0-9 N5CP 2015 Nch 432..... |



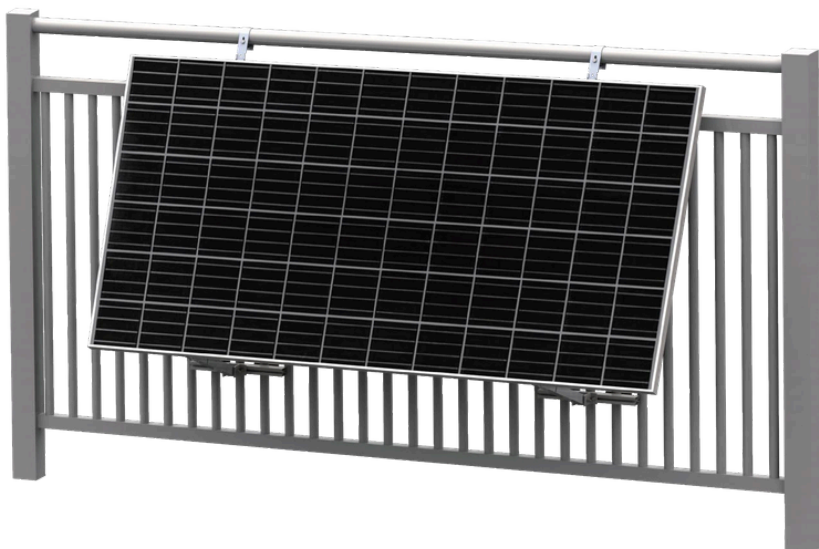
### Solar Fencing System

| TECHNICAL DATA  |  |
|-----------------|--|
| Wind Speed      | 50m/s(3s gust,MRI=50Y)   |
| Snow Load       | 1.20 Kpa   |
| Module Layout   | Landscape & Portrait   |
| Tilt Angle      | 90°  |
| Material        | Q235B Q355B、Zn-Al-Mg Coating Steel   |
| Design Standard | ASCE7-05/7-10/7-16 GB50009-2012 JIS C8955-2017 AS NZS1170.2-2021 EURCODEF 0-9 NSCP 2015 Nch 432..... |



## ● Innovation Application Solar Fencing System Balcony Mounting System

Innovation application of renewable energy, improve the space utilization, provides extra power source for resident, reduce dependence on grid. Modular design for easy installation and adjustment.



### Balcony Mounting System

| TECHNICAL DATA  |  |
|-----------------|--|
| Wind Speed      | 40m/s(3s gust,MRI=50Y)   |
| Snow Load       | 0.50 Kpa   |
| Module Layout   | Landscape & Portrait   |
| Tilt Angle      | 5-30°  |
| Material        | AL6005-T6、Q235B Q355B、Stainless Steel  |
| Design Standard | ASCE7-05/7-10/7-16 GB50009-2012 JIS C8955-2017 AS NZS1170.2-2021 EURCODEF 0-9 NSCP 2015 Nch 432..... |



## Cable Trays



Stainless Steel Cable Tray



Aluminum Cable Tray

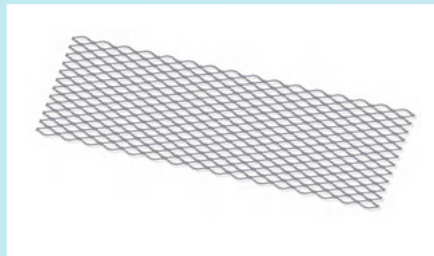


Zn-al-mg Cable Tray

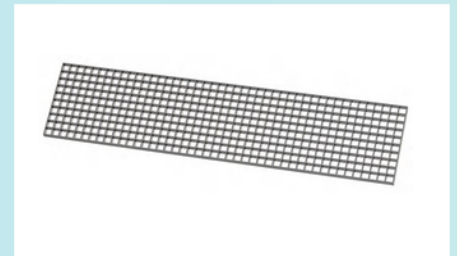
## Walk Way



Glass Fiber Reinforced Plastics  
Walk Way



Aluminum  
Walk Way



Carbon Steel  
Walk Way

### ● Solar Mounting Accessories

BEXIE provides high quality solar mounting accessories one-stop service. Strict quality checking process among material selection, design, manufacturing and shipment, improve durability of solar system, reduce maintaining cost over system lifetime.

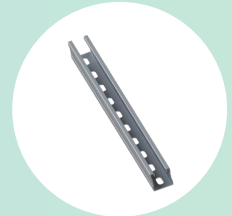
## ● Solar Mounting Accessories

BEXIE provides high quality solar mounting accessories one-stop service. Strict quality checking process among material selection, design, manufacturing and shipment, improve durability of solar system, reduce maintaining cost over systemlifetime.

### Aluminum Solar Mounting Accessories

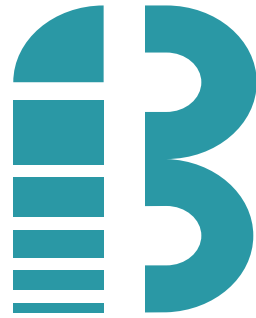


### Carbon Steel Solar Mounting Accessories



### Stainless Steel Solar Mounting Accessories





**BEXIE ENERGY**



**bexieenergy.com**

**This brochure is a publication from BEXIE GROUP.**

BEXIE makes reservations for any factual or printing errors in this brochure.

+34 985 194 232

Calle Peña Santa 68, Polígono Industrial Silvota,  
33192, Llanera, Asturias

[www.bexieenergy.com](http://www.bexieenergy.com)

BEXIE GROUP designs, manufactures and delivers high-performance solar electric technology worldwide.