

## TECHNICAL DATASHEET

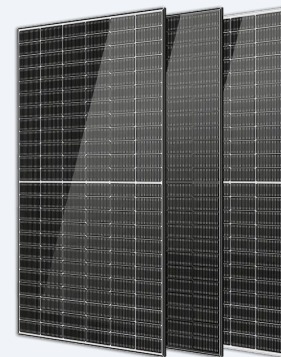
**BE565-590T8-144(HC)**

TOPCON MONOCRYSTALLINE SOLAR PANEL

// RESIDENTIAL USE // COMMERCIAL USE

// UTILITY SCALE

The BE565-590T8-144(HC) photovoltaic module from Bexie Group incorporates next-generation TOPCon technology, designed to maximize energy efficiency and minimize long-term degradation. This technology enables superior performance in demanding residential, commercial, and industrial installations.



- ✓ SMBB technology.
- ✓ PID resistance.
- ✓ Hot 2.0 technology.
- ✓ Enhanced mechanical load.
- ✓ Durability against extreme environmental conditions.

## FEATURES



HIGH EFFICIENCY CELLS



LOW TEMPERATURE COEFFICIENT



WEATHER RESISTANT



SUSTAINABLE ENERGY



+34 985 194 232

[www.bexieenergy.com](http://www.bexieenergy.com)Calle Peña Santa 68, Polígono  
Industrial Silvota, 33192, Llanera, Asturias

MODEL	BE565T8-144 (HC)	BE570T8-144 (HC)	BE575T8-144 (HC)
<b>FEATURES</b>			
Max. Power	STC 565 NOCT 425	STC 570 NOCT 429	STC 575 NOCT 432
Max. Voltage, Vmpp (V)	STC 42.14 NOCT 39.52	STC 42.29 NOCT 39.65	STC 42.44 NOCT 39.78
Current, Imp (A)	STC 13.41 NOCT 10.75	STC 13.48 NOCT 10.81	STC 13.55 NOCT 10.87
Voltage Open Circuit, Voc (V)	STC 50.87 NOCT 48.32	STC 51.07 NOCT 48.51	STC 51.27 NOCT 48.70
Short Circuit Current, Isc (A)	STC 14.19 NOCT 11.46	STC 14.25 NOCT 11.50	STC 14.31 NOCT 11.55
Module Efficiency (%)	21.87	22.07	22.26
Max. Power Tolerance (W)		0 - 5	
Max. System Voltage (V)		1,000/1,500Vdc (IEC)	
Max. Series Fuse Rating (A)		25A	
<b>MECHANICAL SPECIFICATIONS</b>			
N° of cells		144 (6 × 24)	
Dimensions		2,278 x 1,134 x 30mm	
Connector		MC4 Compatible	
Cells		N type Mono-crystalline	
Front glass	3.2mm, Anti-Reflection Coating, High Transmission, Low Iron, Tempered Glass		
Packaging Configuration	36pcs/Pallet 720pcs/40HQ Container		
Weight		28kg	
Junction Box		IP68 Rated	
Frame		Anodized aluminum alloy	
Cable		4mm <sup>2</sup>	

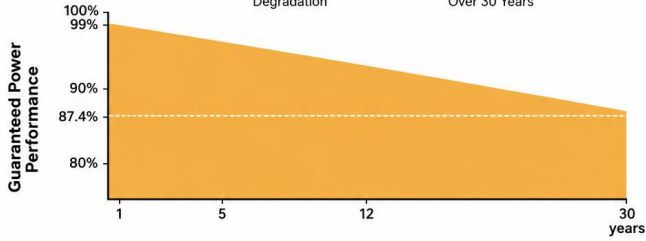
MODEL	BE580T8-144 (HC)	BE585T8-144 (HC)	BE590T8-144 (HC)
<b>FEATURES</b>			
Max. Power	STC 580 NOCT 436	STC 585 NOCT 440	STC 590 NOCT 444
Max. Voltage, Vmpp (V)	STC 42.59 NOCT 39.87	STC 42.74 NOCT 39.96	STC 42.88 NOCT 40.08
Current, Impp (A)	STC 13.62 NOCT 10.94	STC 13.69 NOCT 11.02	STC 13.76 NOCT 11.08
Voltage Open Circuit, Voc (V)	STC 51.47 NOCT 48.89	STC 51.67 NOCT 49.08	STC 51.87 NOCT 49.27
Short Circuit Current, Isc (A)	STC 14.37 NOCT 11.60	STC 14.43 NOCT 11.65	STC 14.49 NOCT 11.70
Module Efficiency (%)	22.45	22.63	22.84
Max. Power Tolerance (W)		0 - 5	
Max. System Voltage (V)		1,000/1,500Vdc (IEC)	
Max. Series Fuse Rating (A)		25A	
<b>MECHANICAL SPECIFICATIONS</b>			
N° of cells		144 (6 × 24)	
Dimensions		2,278 x 1,134 x 30mm	
Connector		MC4 Compatible	
Cells		N type Mono-crystalline	
Front glass	3.2mm, Anti-Reflection Coating, High Transmission, Low Iron, Tempered Glass		
Packaging Configuration	36pcs/Pallet 720pcs/40HQ Container		
Weight		28kg	
Junction Box		IP68 Rated	
Frame		Anodized aluminum alloy	
Cable		4mm <sup>2</sup>	

**NOTES**

STC: Irradiance 1000 W/m<sup>2</sup>, Cell Temperature 25°C, AM1.5 NOCT: Irradiance 800 W/m<sup>2</sup>, Temperature 20°C, Wind Speed 1 m/s.

### LINEAR PERFORMANCE WARRANTY

**1 %** First-year Degradation  
**0.40 %** Annual Degradation Over 30 Years



Cells Temperature: 25°C. Current-Voltage & Power Voltage Curve (435)

