

TECHNICAL DATASHEET

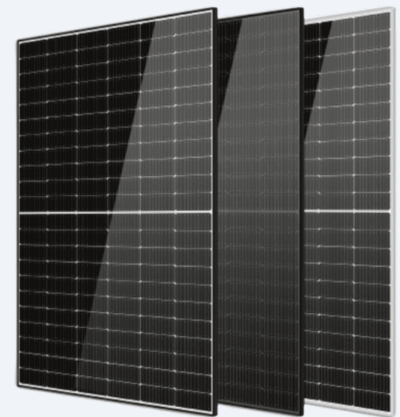
BE510-545T8-132(HC)

TOPCON MONOCRYSTALLINE SOLAR PANEL

// RESIDENTIAL USE // COMMERCIAL USE

// UTILITY SCALE

State-of-the-art technology designed for maximum efficiency and durability, with a low annual degradation rate and exceptional performance in low irradiance conditions and high temperatures.



- ✓ SMBB technology.
- ✓ PID resistance.
- ✓ Hot 2.0 technology.
- ✓ Enhanced mechanical load.
- ✓ Durability against extreme environmental conditions.

FEATURES



HIGH EFFICIENCY CELLS



LOW TEMPERATURE COEFFICIENT



WEATHER RESISTANT



SUSTAINABLE ENERGY



+34 985 194 232

www.bexieenergy.comCalle Peña Santa 68, Polígono
Industrial Silvota, 33192, Llanera, Asturias

| MODEL | BE510T8-132(HC) | BE515T8-132(HC) | BE520T8-132(HC) | BE525T8-132(HC) |
|-------------------------------------|---|-------------------------|-------------------------|-------------------------|
| GENERAL | | | | |
| Power Output | STC 510 NOCT 388 | STC 515 NOCT 392 | STC 520 NOCT 395 | STC 525 NOCT 399 |
| Voltage Open Circuit, Voc (V) | STC 46.74 NOCT 44.20 | STC 46.98 NOCT 44.40 | STC 47.33 NOCT 44.80 | STC 47.57 NOCT 45.00 |
| Short Circuit Current, Isc (A) | STC 14.01 NOCT 11.30 | STC 14.03 NOCT 11.34 | STC 14.10 NOCT 11.39 | STC 14.16 NOCT 11.44 |
| Max. Voltage, Vmmp (V) | STC 39.44 NOCT 10.63 | STC 39.64 NOCT 36.70 | STC 39.84 NOCT 36.90 | STC 40.04 NOCT 37.10 |
| Current, Impp (A) | STC 12.94 NOCT 10.63 | STC 12.99 NOCT 10.68 | STC 13.05 NOCT 10.71 | STC 13.11 NOCT 10.76 |
| Module Efficiency (%) | 21.47 | 21.69 | 21.90 | 22.11 |
| Max. Power Tolerance (W) | 0 - 5 | | | |
| Max. System Voltage (V) | 1.500Vdc (IEC/UL) | | | |
| Maximum Series Fuse Rating (A) | 25A | | | |
| TEMPERATURE COEFFICIENT | | | | |
| Temp. Coefficient (Pmax) | -0.29%/°C | | | |
| Temp. Coefficient (Isc) | 0.045%/°C | | | |
| Temp. Coefficient (Voc) | -0.225%/°C | | | |
| Nominal Operating Cell Temp. (NOCT) | 45°C (±2°C) | | | |
| Operating Temperature | -40 ~ +85°C | | | |
| MECHANICAL SPECIFICATIONS | | | | |
| Laminate Structure | Glass/POE/Cells/POE/Backsheet | | | |
| Dimensions | 2,094 x 1,134 x 30mm | | | |
| Connector | MC4 Compatible | | | |
| Cells | N-Type 16BB 182mm (2 x 66pcs) | | | |
| Front glass | 3.2mm, Anti-Reflection Coating, High Transmission, Low Iron, Tempered Glass | | | |
| Packaging Configuration | 36pcs/Pallet; 792pcs/40HQ Container | | | |
| Weight | 26.9kg | | | |
| Junction Box | IP68 | | | |
| Frame | Anodized aluminum alloy | | | |
| Maximum Static Load, Front | 5,400Pa (112lb/ft ²) | | | |
| Maximum Static Load, Back | 2,400Pa (50lb/ft ²) | | | |
| Cable | 4mm ² | | | |

| MODEL | BE530T8-132(HC) | BE535T8-132(HC) | BE540T8-132(HC) | BE545T8-132(HC) |
|-------------------------------------|---|-------------------------|-------------------------|-------------------------|
| GENERAL | | | | |
| Power Output | STC 530 NOCT 403 | STC 535 NOCT 408 | STC 540 NOCT 411 | STC 545 NOCT 415 |
| Voltage Open Circuit, Voc (V) | STC 47.81 NOCT 45.20 | STC 48.04 NOCT 45.50 | STC 48.29 NOCT 45.60 | STC 48.53 NOCT 45.80 |
| Short Circuit Current, Isc (A) | STC 14.22 NOCT 11.49 | STC 14.29 NOCT 11.54 | STC 14.34 NOCT 11.59 | STC 14.40 NOCT 11.64 |
| Max. Voltage, Vmmp (V) | STC 40.24 NOCT 37.30 | STC 40.44 NOCT 37.60 | STC 40.52 NOCT 37.71 | STC 40.59 NOCT 37.91 |
| Current, Impp (A) | STC 13.17 NOCT 10.81 | STC 13.23 NOCT 10.86 | STC 13.33 NOCT 10.90 | STC 13.43 NOCT 10.95 |
| Module Efficiency (%) | 22.32 | 22.53 | 22.74 | 22.95 |
| Max. Power Tolerance (W) | 0 - 5 | | | |
| Max. System Voltage (V) | 1.500Vdc (IEC/UL) | | | |
| Maximum Series Fuse Rating (A) | 25A | | | |
| TEMPERATURE COEFFICIENT | | | | |
| Temp. Coefficient (Pmax) | -0.29%/°C | | | |
| Temp. Coefficient (Isc) | 0.045%/°C | | | |
| Temp. Coefficient (Voc) | -0.225%/°C | | | |
| Nominal Operating Cell Temp. (NOCT) | 45°C (±2°C) | | | |
| Operating Temperature | -40 ~ +85°C | | | |
| MECHANICAL SPECIFICATIONS | | | | |
| Laminate Structure | Glass/POE/Cells/POE/Backsheet | | | |
| Dimensions | 2,094 x 1,134 x 30mm | | | |
| Connector | MC4 Compatible | | | |
| Cells | N-Type 16BB 182mm (2 x 66pcs) | | | |
| Front glass | 3.2mm, Anti-Reflection Coating, High Transmission, Low Iron, Tempered Glass | | | |
| Packaging Configuration | 36pcs/Pallet; 792pcs/40HQ Container | | | |
| Weight | 26.9kg | | | |
| Junction Box | IP68 | | | |
| Frame | Anodized aluminum alloy | | | |
| Maximum Static Load, Front | 5,400Pa (112lb/ft ²) | | | |
| Maximum Static Load, Back | 2,400Pa (50lb/ft ²) | | | |
| Cable | 4mm ² | | | |

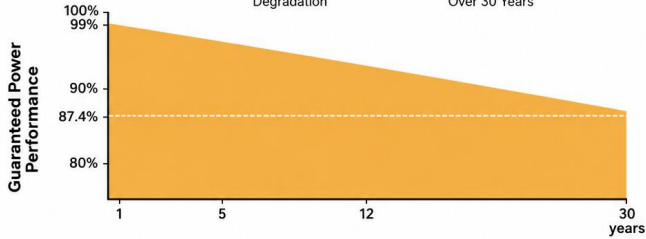
NOTES

STC: Irradiance 1000 W/m², Cell Temperature 25°C, AM1.5 NOCT: Irradiance 800 W/m², Temperature 20°C, Wind Speed 1 m/s.

LINEAR PERFORMANCE WARRANTY

1 %
First-year
Degradation

0.40 %
Annual Degradation
Over 30 Years



Cells Temperature: 25°C. Current-Voltage & Power Voltage Curve (535)

