

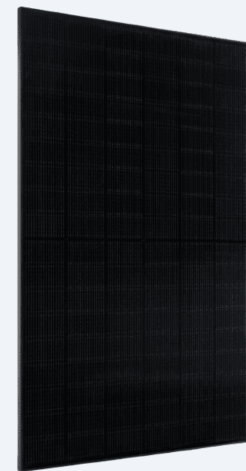
TECHNICAL DATASHEET

BE425-445T8-108(HC)BF

TOPCON BIFACIAL SOLAR PANEL

// RESIDENTIAL USE // COMMERCIAL USE // UTILITY SCALE

Bifacial N-Type photovoltaic module ranging from 425 to 445W with TOPCon SMBB technology and 108 half-cut cells. It generates energy from both sides of the panel, maximizing output in installations with reflective ground surfaces or light-colored roofs. It features low annual degradation and high durability under extreme environmental conditions.



- ✓ SMBB technology.
- ✓ PID resistance.
- ✓ Hot 2.0 technology.
- ✓ Enhanced mechanical load.
- ✓ Durability against extreme environmental conditions.

FEATURES



HIGH EFFICIENCY CELLS



LOW TEMPERATURE COEFFICIENT



WEATHER RESISTANT



SUSTAINABLE ENERGY



+34 985 194 232

www.bexieenergy.comCalle Peña Santa 68, Polígono
Industrial Silvota, 33192, Llanera, Asturias

MODEL	BE425T8-108 (HC)BF	BE430T8-108 (HC)BF	BE435T8-108 (HC)BF	BE440T8-108 (HC)BF
GENERAL				
Maximum Power	STC 425 NOCT 319	STC 430 NOCT 323	STC 435 NOCT 327	STC 440 NOCT 330
Max. Voltage, Vmpp (V)	STC 32.10 NOCT 30.21	STC 32.27 NOCT 30.37	STC 32.44 NOCT 30.53	STC 32.61 NOCT 30.69
Current, Imp (A)	STC 13.24 NOCT 36.29	STC 13.33 NOCT 10.65	STC 13.41 NOCT 10.71	STC 13.50 NOCT 10.78
Voltage Open Circuit, Voc (V)	STC 38.20 NOCT 36.29	STC 38.40 NOCT 36.48	STC 38.60 NOCT 36.67	STC 38.80 NOCT 36.86
Short Circuit Current, Isc (A)	STC 13.98 NOCT 11.28	STC 14.09 NOCT 11.37	STC 14.19 NOCT 11.46	STC 14.30 NOCT 11.55
Module Efficiency(%)	21.76	22.02	22.28	22.53
Max. Power Tolerance (W)	0 - 5			
Max. System Voltage (V)	1,000/1,500Vdc (IEC)			
Maximum Series Fuse Rating (A)	25A			
MECHANICAL SPECIFICATIONS				
Dimensions	1,722 x 1,134 x 30mm			
N° of cells	108 (2 x 54)			
Cells	N type Mono-crystalline			
Front glass	2.0mm, Anti-Reflection Coating			
Back glass	2.0mm, Heat Strengthened Glass			
Packaging Configuration	37pcs/Pallet;962pcs/40HQ Container			
Weight	23kg			
Junction Box	IP68 Rated			
Frame	Anodized aluminum alloy			
Cable	4mm ²			
TEMPERATURE COEFFICIENT				
Temperature Coefficient of Pmax	-0.290%/°C			
Temperature Coefficient of Voc	-0.26%/°C			
Temperature Coefficient of Isc	0.046%/°C			
Nominal Operating Cell Temperature (NOCT)	42±2°C			

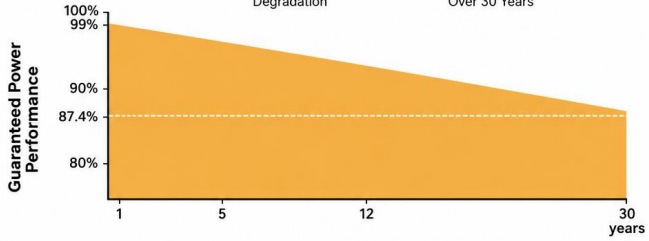
MODEL	BE445T8-108 (HC)BF	BE450T8-108 (HC)BF	BE455T8-108 (HC)BF
GENERAL			
Maximum Power	STC 445 NOCT 334	STC 450 NOCT 338	STC 455 NOCT 342
Max. Voltage, Vmpp (V)	STC 32.78 NOCT 30.86	STC 32.95 NOCT 31.02	STC 33.12 NOCT 31.18
Current, Impp (A)	STC 13.58 NOCT 10.84	STC 13.66 NOCT 10.91	STC 13.74 NOCT 10.98
Voltage Open Circuit, Voc (V)	STC 39.00 NOCT 37.05	STC 39.20 NOCT 37.24	STC 39.40 NOCT 37.43
Short Circuit Current, Isc (A)	STC 14.39 NOCT 11.65	STC 14.48 NOCT 11.73	STC 14.57 NOCT 11.81
Module Efficiency(%)	22.79	23.04	23.29
Max. Power Tolerance (W)		0 - 5	
Max. System Voltage (V)		1,000/1,500Vdc (IEC)	
Maximum Series Fuse Rating (A)		25A	
MECHANICAL SPECIFICATIONS			
Dimensions	1,722 x 1,134 x 30mm		
N° of cells	108 (2 x 54)		
Cells	N type Mono-crystalline		
Front glass	2.0mm, Anti-Reflection Coating		
Back glass	2.0mm, Heat Strengthened Glass		
Packaging Configuration	37pcs/Pallet;962pcs/40HQ Container		
Weight	23kg		
Junction Box	IP68 Rated		
Frame	Anodized aluminum alloy		
Cable	4mm ²		
TEMPERATURE COEFFICIENT			
Temperature Coefficient of Pmax	-0.290%/°C		
Temperature Coefficient of Voc	-0.26%/°C		
Temperature Coefficient of Isc	0.046%/°C		
Nominal Operating Cell Temperature (NOCT)	42±2°C		

NOTES

STC: Irradiance 1000 W/m², Cell Temperature 25°C, AM1.5 NOCT: Irradiance 800 W/m², Temperature 20°C, Wind Speed 1 m/s

LINEAR PERFORMANCE WARRANTY

1 % First-year Degradation **0.40 %** Annual Degradation Over 30 Years



Cells Temperature: 25°C. Current-Voltage & Power Voltage Curve (435)

