

## TECHNICAL DATASHEET

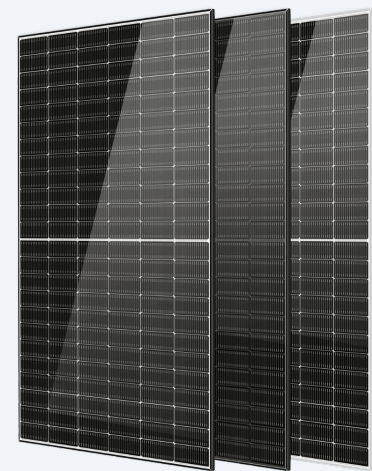
**BE425-445T8-108(HC)**

TOPCON MONOCRYSTALLINE SOLAR PANEL

// RESIDENTIAL USE // COMMERCIAL USE

// UTILITY SCALE

TopCon monocrystalline solar panel ranging from 425 to 445W with 108 half-cut N-Type cells. It offers high conversion efficiency, a low annual degradation rate, and an advanced cell architecture. Delivers outstanding performance even under harsh weather conditions and high temperatures.



- ✓ SMBB technology.
- ✓ PID resistance.
- ✓ Hot 2.0 technology.
- ✓ Enhanced mechanical load.
- ✓ Durability against extreme environmental conditions.

## FEATURES



HIGH EFFICIENCY CELLS



LOW TEMPERATURE COEFFICIENT



WEATHER RESISTANT



SUSTAINABLE ENERGY



+34 985 194 232

[www.bexieenergy.com](http://www.bexieenergy.com)Calle Peña Santa 68, Polígono  
Industrial Silvota, 33192, Llanera, Asturias

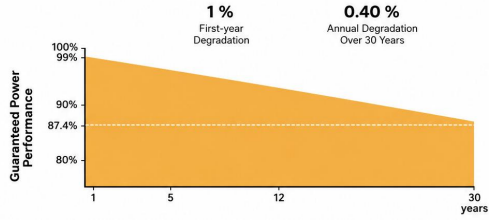
MODEL	BE425T8-108 (HC)	BE430T8-108 (HC)	BE435T8-108 (HC)	BE440T8-108 (HC)
<b>GENERAL</b>				
Maximum Power	STC 425 NOCT 319	STC 430 NOCT 323	STC 435 NOCT 327	STC 440 NOCT 330
Max. Voltage, V <sub>mpp</sub> (V)	STC 32.10 NOCT 30.21	STC 32.27 NOCT 30.37	STC 32.44 NOCT 30.53	STC 32.61 NOCT 30.69
Current, I <sub>mpp</sub> (A)	STC 13.24 NOCT 10.58	STC 13.33 NOCT 10.65	STC 13.41 NOCT 10.71	STC 13.50 NOCT 10.78
Voltage Open Circuit, V <sub>oc</sub> (V)	STC 38.20 NOCT 36.29	STC 38.40 NOCT 36.48	STC 38.60 NOCT 36.67	STC 38.80 NOCT 36.86
Short Circuit Current, I <sub>sc</sub> (A)	STC 13.98 NOCT 11.28	STC 14.09 NOCT 11.37	STC 14.19 NOCT 11.46	STC 14.30 NOCT 11.55
Module Efficiency(%)	21.76	22.02	22.28	22.53
Max. Power Tolerance (W)	0 - 5			
Max. System Voltage (V)	1,000/1,500Vdc (IEC)			
Maximum Series Fuse Rating (A)	25A			
<b>MECHANICAL SPECIFICATIONS</b>				
Dimensions	1,722 x 1,134 x 30mm			
N° of cells	108 (2 x 54)			
Cells	N type Mono-crystalline			
Front glass	3.2mm, Anti-Reflection Coating, High Transmission, Low Iron, Tempered Glass			
Packaging Configuration	37pcs/Pallet; 962pcs/40HQ Container			
Weight	22kg			
Junction Box	IP68 Rated			
Frame	Anodized aluminum alloy			
Cable	4mm <sup>2</sup>			
<b>TEMPERATURE COEFFICIENT</b>				
Temperature Coefficient of P <sub>max</sub>	-0.290%/°C			
Temperature Coefficient of V <sub>oc</sub>	-0.26%/°C			
Temperature Coefficient of I <sub>sc</sub>	0.046%/°C			
Nominal Operating Cell Temperature (NOCT)	42±2°C			

MODEL	BE445T8-108 (HC)	BE450T8-108 (HC)	BE455T8-108 (HC)
<b>GENERAL</b>			
Maximum Power	STC 445 NOCT 334	STC 450 NOCT 338	STC 455 NOCT 342
Max. Voltage, Vmpp (V)	STC 32.78 NOCT 30.86	STC 32.95 NOCT 31.02	STC 33.12 NOCT 31.18
Current, Imp (A)	STC 13.58 NOCT 10.84	STC 13.66 NOCT 10.91	STC 13.74 NOCT 10.98
Voltage Open Circuit, Voc (V)	STC 39.00 NOCT 37.05	STC 39.20 NOCT 37.24	STC 39.40 NOCT 37.43
Short Circuit Current, Isc (A)	STC 14.39 NOCT 11.65	STC 14.48 NOCT 11.73	STC 14.57 NOCT 11.81
Module Efficiency(%)	22.79	23.04	23.29
Max. Power Tolerance (W)		0 - 5	
Max. System Voltage (V)		1,000/1,500Vdc (IEC)	
Maximum Series Fuse Rating (A)		25A	
<b>MECHANICAL SPECIFICATIONS</b>			
Dimensions	1,722 x 1,134 x 30mm		
N° of cells	108 (2 x 54)		
Cells	N type Mono-crystalline		
Front glass	3.2mm, Anti-Reflection Coating, High Transmission, Low Iron, Tempered Glass		
Packaging Configuration	37pcs/Pallet; 962pcs/40HQ Container		
Weight	22kg		
Junction Box	IP68 Rated		
Frame	Anodized aluminum alloy		
Cable	4mm <sup>2</sup>		
<b>TEMPERATURE COEFFICIENT</b>			
Temperature Coefficient of Pmax	-0.290%/°C		
Temperature Coefficient of Voc	-0.26%/°C		
Temperature Coefficient of Isc	0.046%/°C		
Nominal Operating Cell Temperature (NOCT)	42±2°C		

**NOTES**

STC: Irradiance 1000 W/m<sup>2</sup>, Cell Temperature 25°C, AM1.5 NOCT: Irradiance 800 W/m<sup>2</sup>, Temperature 20°C, Wind Speed 1 m/s

## LINEAR PERFORMANCE WARRANTY



Cells Temperature: 25°C. Current-Voltage & Power Voltage Curve (435)

