

BFS-ESW11-K

EMERGENCY BUTTON SWITCH SPECIFICATIONS



The Emergency Button Switch is supplied in black for the UK market.

- ✓ Emergency shutdown switch for photovoltaic systems equipped with Bexie optimizers.
- ✓ Instant manual shutdown of the panels.
- ✓ Automatic shutdown when AC power is lost.
- ✓ Powered by the grid or by the solar inverter.
- ✓ Complete and safe RSD solution.
- ✓ Status LED indicator and easy installation.



+34 985 194 232



www.bexieenergy.com



Calle Peña Santa 68, Polígono Industrial
Silvota, 33192, Llanera, Asturias

BFS-ESW11-K

EMERGENCY BUTTON SWITCH SPECIFICATIONS

Model

BFS-ESW11-K

Features

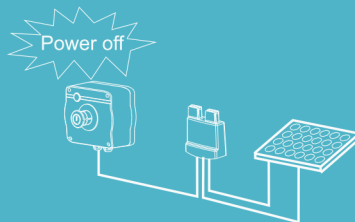
Input Voltage Range	100-240VAC
Maximum Working Current	0.5A
Input Frequency Range	47-63Hz
Rated Output Voltage	24VDC
Maximum Output Current	315mA
Maximum Output Power	7.06W
Power Supply Cables	0.823 mm ² / 18 AWG
Cables Torque	0.5 Nm / 4.5 lbf-in
DIN Terminal Connector Wiring	0.5–4 mm ² / 20 AWG–10 AWG (Note: BFS-01B / BFS-02B uses communication connector 2 × 0.823 mm ²)
DIN Terminal Torque	0.5–0.8 Nm / 4.5–7 lbin
Ambient Operating Temperature	-30°C to +70°C
BFS-01B	40 units
BFS-02B	20 units
Maximum Distance (First PV Power Optimizer to the Emergency Button Switch)	150 m

Method1



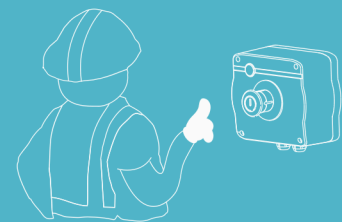
Automatic shutdown the panels when there is a temperature in the area higher than 100°C detected.

Method2



Automatic shutdown the panels when the power supply loss in the button switch box.

Method3



The fireman and people can manual the button switch to shutdown the panels when there is an emergency.



+34 985 194 232



www.bexieenergy.com



Calle Peña Santa 68, Polígono Industrial Silvota, 33192, Llanera, Asturias